

# Leopard Trail Camping Safari

## Budget

16 nights / 17 days

Starts Maun, Botswana / Ends Livingstone, Zambia



From **EUR 2375 per person**

P/Bag 0178, Maun, Botswana

Tel: +267 7231 1321 info@safarispecialists.net

Botswana is our home  
Safaris are our passion



	Location	Accommodation	Transfers / Activities	Meals
1	Hainaveld, Kalahari area Travel: 180km, 4 hrs	<b>Camping</b> Participation Camping, 2.1m x 2.1m dome tents	Pick up approx 0730 from Maun, drive to the Hainaveld area bordering the Central Kalahari Game Reserve. Afternoon cultural walk with a San tracker. Pre-night in Maun is required due to early start	L, D only
2	Central Kalahari Game Reserve Travel: 120km, 4-5 hrs	<b>Camping</b> – fixed bush ablutions	Drive through to the Central Kalahari Game Reserve and set up camp. Game drives	B, L, D
3	Central Kalahari Game Reserve	<b>Camping</b>	Game drives in Central Kalahari (visiting over 3 full days Deception Valley, Passarge Valley and more) - the season will determine the routing	B, L, D
4	Central Kalahari Game Reserve	<b>Camping</b>	Exploring Central Kalahari Game Reserve on game drives	B, L, D
5	Central Kalahari Game Reserve	<b>Camping</b>	Exploring Central Kalahari Game Reserve on game drives	B, L, D
6	Maun Travel: 340km, 5-5 hrs	<b>Comfortable Lodge</b> (Island Safari Lodge or similar)	Pack up camp and make your way back to Maun at a leisurely pace. Afternoon at leisure or optional scenic flight over the Delta (additional costs). Dinner for own account	B, L only
7	Southern Okavango Delta Travel: 60km, 1-2 hrs	<b>Camping</b> – wild	Drive to southern tip of the Okavango Delta and continue on mokoros to a small island in the Delta	B, L, D
8	Southern Okavango Delta	<b>Camping</b> – wild	Mokoro excursions and guided nature walks	B, L, D
9	Okavango Delta Travel: 50km, 1-2 hrs	<b>Camping</b> – wild	Move towards drier areas of the delta to a campsite just outside Moremi Game Reserve	B, L, D
10	Moremi Game Reserve, Western Travel: 80km, 3-4hrs	<b>Camping</b> – wild	Head to Moremi, afternoon game drives in the park	B, L, D
11	Moremi Game Reserve, Western	<b>Camping</b> – wild	Game drives in Moremi	B, L, D
12	Moremi, Khwai area	<b>Camping</b> – wild	Move camp to the Khwai area, game drives	B, L, D
13	Chobe National	<b>Camping</b> – wild	Drive to Savute area, game drives	B, L, D

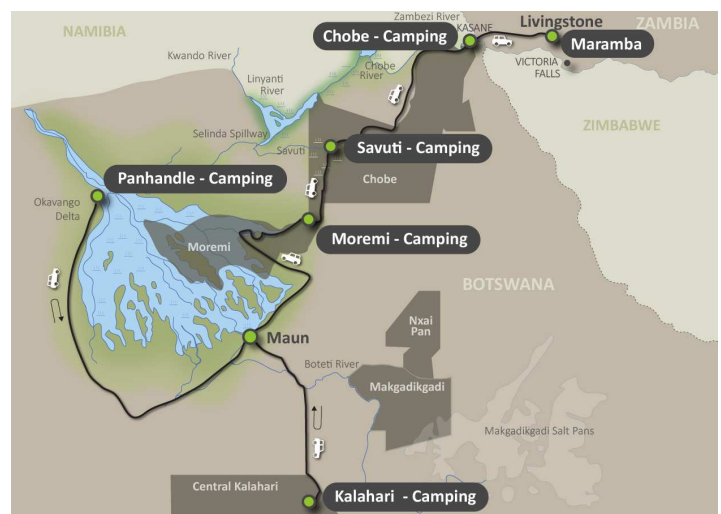
## Safari Specialists – Leopard Camping Safari – Budget - 16 nights

	Park, Savuti area Travel: 120km, 7-8hrs			
14	Chobe National Park, Chobe River Travel Time: 170km, 5-6hrs	<b>Camping – wild</b>	Drive to Chobe River area, game drives	B, L, D
15	Chobe National Park, Chobe River	<b>Camping – wild</b>	Game drives in Chobe River area	B, L, D
16	Livingstone, Victoria Falls Zambian side Travel time: 100km, 2-3hrs	<b>Maramba River Lodge</b> (or similar)	Cross the border to Zambia, afternoon at leisure in Livingstone. The guide will take you to Victoria Falls (Zambian side) but entrance is for your own account. Dinner for own account	B & L only
17	Safari Ends Livingstone		Safari ends in Livingstone, optional transfers at additional cost	B only

B=breakfast / L=lunch / D=dinner

## Highlights

- San cultural interaction
- Exploring the Central Kalahari Game Reserve
- Okavango Delta & mokoro excursions
- Optional scenic flight over Okavango Delta
- Moremi Game Reserve
- Chobe National Park & Savute
- Optional activities in Livingstone, Victoria Falls Zambian side



**Light Participation camping** means that you set up your own tents (with guidance/assistance) and assist with packing/unpacking your luggage, but aside from this the camp chores are done by the camp assistant and guide (cooking/cleaning/firewood etc). It is one of the most easily mobile forms of camping and allows you to visit a range of areas within a limited space of time.

## Cost of the safari 2016

Season	Cost per person sharing	Single supplement*	Average nightly rate per person
Low (Jan- June & Nov – Dec)	EUR 2375 per person	EUR 95 per person	EUR 140 per person per night
High (July – Oct)	EUR 2565 per person	EUR 95 per person	EUR 160 per person per night

### Please Note:

- Single supplement applies to voluntary singles only, single travelers may book on a 'share' basis where they will be nominated to share with a same-sex travel companion on the safari.
- The above rate is subject to change due to major currency fluctuations and fuel surcharges
- Rates subject to National Park Fee increase
- Optional pre and post safari extensions on request

### Botswana Park Fees and Departure Taxes – Increase

Please be aware that the Botswana Park Fees and Airport Departure taxes may increase in 2016/2017. Regrettably such increases are beyond our control and are excluded from any bookings, provisional or confirmed. We will inform you should any increase be advised.



**Travel for Impact – Responsible Travel**

By booking this itinerary, you donate USD\$2 for every night of travel per person on the booking. Your donation goes to **Travel for Impact (TFI)** and ensures that your safari has a meaningful impact on the people who live locally. For more information on giving back to your chosen destination of travel, visit [www.travelforimpact.com](http://www.travelforimpact.com)

**Safari Dates 2016:**

**Low:** 07 – 23 January, 28 January – 13 February, 18 February – 05 March, 10 - 26 March, 07 – 23 April, 05 - 21 May, 26 May – 11 June, 19 June – 05 July, 27 October - 12 November, 08 – 24 December

**High:** 03 -19 July, 17 July – 02 August, 31 July - 16 August, 28 August – 13 September, 25 September – 11 October, 09 - 25 October

Please note the dates underlined run with a French speaking interpreter  
 Please note the dates highlighted in **bold** run with a German speaking interpreter  
 Many trips run parallel in French and German (separate departures) for which they need a minimum number of guests to guarantee. Please discuss with your consultant.

Inclusions	Exclusions
<ul style="list-style-type: none"> <li>• 15 nights light participation camping (includes camping equipment/mattress)</li> <li>• 1 night comfortable lodge accommodation in Maun on a bed and breakfast basis</li> <li>• All meals whilst camping (where indicated)</li> <li>• Road transfers Maun – Hainaveld – Central Kalahari – Maun - Okavango Delta - Moremi – Savute – Kasane</li> <li>• Camping and current park entrance fees</li> <li>• Services of a Professional Guide and camp assistant</li> <li>• 1 night comfortable lodge in Livingstone (includes breakfast only, all activities optional extra cost)</li> <li>• All activities indicated with current corresponding National Park Fees</li> <li>• Road/boat transfer from Kasane to Livingstone</li> </ul>	<ul style="list-style-type: none"> <li>• Sleeping bag and small pillow (cost to hire 20 EUR), towel whilst camping, optional additional mattress 10 EUR</li> <li>• Pre night in Maun (required due to early start on day 1, please contact us for options)</li> <li>• All beverages</li> <li>• Dinner whilst in Maun on day 6 and Livingstone</li> <li>• Airport transfer from lodge to Livingstone Airport</li> <li>• Optional scenic flight whilst in Maun on Day 6</li> <li>• Entrance fees to Victoria Falls (currently \$20 USD on the Zambian side)</li> <li>• All extras such as telephone calls/curio shopping/postage and so forth</li> <li>• All Travel Insurances</li> <li>• International flights &amp; taxes</li> <li>• Visas if required (Botswana/Zambia)</li> <li>• Errors and omissions</li> </ul>

**Detailed Itinerary:**

Day 1: <b>CAMPING</b> , Hainaveld / Kalahari area (Lunch and Dinner)	<b>Travel Time: Maun – Hainaveld Game Farm</b> Approx. 180km, 4hrs
---	---

The safari begins in Maun, where your guide will meet you at 07h30 at a pre-arranged meeting point. You will travel 170km to a game farm on the northern border of the Central Kalahari Game reserve, set up camp and have a safari briefing. In the afternoon you will participate in a nature walk led by local Bushmen trackers. They will share their intricate bush knowledge and give you an insight into their unique and intriguing culture.

## Safari Specialists – Leopard Camping Safari – Budget - 16 nights



**Days 2-5 : CAMPING, Central Kalahari Game Reserve (full board)**

**Travel time: Hainaveld – Central Kalahari  
Approx. 120km, 4-5hrs including game drives**

You will wake up as the sun rises and enter the pristine wilderness of the largest game reserve in Botswana. The next four days will be spent exploring the undeveloped wilderness of the northern region of the Kalahari, moving from camp to camp. You will visit Passarge Valley and Deception Valley in your exploration of the Kalahari. Savour the vast open spaces, clear night skies and uninterrupted beauty on game drives and at camp. This is adventure camping in its purest form as water and communications are limited and we travel as a self-sufficient group. Camping is in a designated campsite with fixed/bush ablutions.

**Days 6: LODGE, Maun (Breakfast and Lunch)**

**Travel time: Central Kalahari - Maun  
Approx. 340 km, 5- 6h**

After our final morning game drive in the Kalahari before we break camp and return to Maun where you will enjoy one night in a comfortable lodge. Afternoon at leisure but you have the option of taking a scenic flight over the Delta for 45 minutes. This magical experience provides another perspective of the Okavango Delta's distinctive water system. During the flight it is even possible to spot large game animals such as Elephants, Giraffe & Hippopotami. Dinner is at your own expense at the lodge.

**Days 7 & 8: CAMPING, Okavango Delta (full board)**

**Travel Time: Maun - Okavango Delta  
Approx. 60km, 1.5 – 2 hrs**

Rising with the sun, you will drive to the southern edge of the Okavango Delta, a special corner of paradise. Once you have reached the edge of the Delta, you will meet the local polers from the local community with their mokoro (a traditional dugout canoe). Quietly cruising along reed lined channels and floodplains, you will enjoy the spectacular landscape of this unique region during the tranquil transfer taking you deeper inside the Delta. You will spend two days exploring this beautiful area with mokoro excursions and guided nature walks on the islands and floodplains of the Okavango. Camping wild with bush ablutions on a small island.



You will leave your main luggage in the trailer and will need to pack a smaller bag (small backpack, hand luggage) with what you need for the 2 days on the island. Transfers from the mainland to the island where you will stay are done on traditional dugout canoes (mekoros) which cannot accommodate large bags. Your main luggage will safely remain in the vehicle that will be parked in a secured area while you are on the island.

## Safari Specialists – Leopard Camping Safari – Budget - 16 nights

**Day 9: CAMPING outside Moremi Game Reserve (full board)**

**Travel time: Okavango Delta – Campsite outside Moremi, Approx. 50km, 1.5 -2hrs**

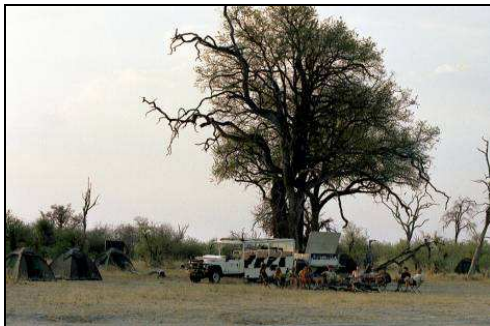
Inspired by the beauty of the Okavango you will start making your way towards the drier regions of the delta and camp in a concession outside the Moremi Game Reserve for 1 night.

**Days 10 – 12: CAMPING, Moremi Game Reserve area/Khwai Community (full board)**

**Travel time: Campsite outside Moremi – Moremi Game Reserve, approx. 80km, 3-4hrs incl. game drive**

Early morning of Day 10 you will enter Moremi Game Reserve, one of the best wildlife areas of Botswana which covers swamp and dry areas. The drive is only 80km, the first 30km on tar road and the remainder on bush roads, thus taking approximately 3-4 hours with game viewing en-route.

The next three days will be spent searching for the wide variety of wildlife and birds that this area is renowned for while absorbing the sounds and beauty of this region. Game drives in the early morning as the sun rises and in the late afternoon as the sun sets will be the norm. After your morning game drive you will return to camp for lunch and a siesta.



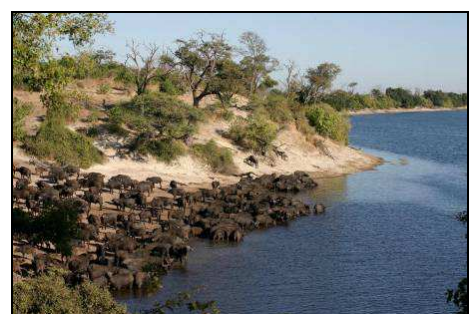
Camping will be in private designated campsites with bush ablutions and generally you move camp after two nights from the western side of the Moremi to the eastern side.

**Days 13 – 15: CAMPING, Chobe National Park (full board)**

**Travel time: Moremi – Savuti  
Approx. 120km, 7-8 hrs incl. game viewing  
Travel time: Savute – Chobe River front  
Approx. 170 km, 5 – 6 hours**

Chobe National Park, with its diverse and striking landscapes, will be your next destination and on day 13 you head up to the Savuti area before you continue up to Chobe river front area on day 14.

As you continue your search for wildlife, you will traverse the recently transformed area of Savuti where a high population of elephants dot the plains and enjoy the renewed waters of the Savute channel (which was dry for nearly 30 years prior to 2010). You camp for one night in the Savute area before heading north to the Chobe River area for a further two nights where your game drives will meander along the banks of the Chobe River, followed by the call of the majestic African Fish Eagle.



Each day you can expect to be on the road for approximately 5 hours, in game viewing areas, with all drives taken at a leisurely pace stopping for refreshments and leg stretches as you go. Camping will be in private designated areas with shared bush ablutions.

## Safari Specialists – Leopard Camping Safari – Budget - 16 nights

Day 16: Lodge/Chalet, Livingstone (bed and breakfast only)

Travel Time: Chobe River – Livingstone  
Approx. 100km, 2-3h

After a morning game drive you will cross the Zambezi River by ferry (this can be a very African experience, as the wait to cross the border can take time) and then drive to Livingstone on the Zambian side of the Victoria Falls, (Visa required), where you will spend the night at a comfortable lodge. In the afternoon there will be time to visit the thunderous Victoria Falls and shop for curios. Dinner will be at your own expense at the lodge

### Day 17: END OF ARRANGEMENTS

The safari officially ends at 10h00 on Day 17 and we can arrange post-tour accommodation, activities and transfers to Livingstone airport or lodges, Victoria Falls airport or lodges or Kasane, Botswana, at an additional cost. Optional activities in Livingstone include White Water Rafting down the Zambezi Gorge, Canoeing on the upper Zambezi, Elephant Back Safaris, Lion Encounter and Helicopter Flights over the Victoria Falls, please ask your guide for further details.

## Special Notes:

### Shared Transfers and Activities

Road, boat, air transfers and activities are quoted on a seat basis (on a shared basis and NOT private) unless otherwise requested or specified. Private charters/transfers can however be requested at an additional cost. Passengers may have various stops en-route to a destination adding to the duration of the transfer. International flight connections are accounted for in the daily schedules.

On shared transfers all the flight times are arranged a day before travel to avoid endless schedule changes. The transfer or charter company reserves the right to specify departure and arrival times.

### Weight and Luggage restrictions

Please advise upon requesting a quotation where a traveller **weighs over 100kg**, as well as at time of confirming the booking, as it may be necessary to cost in an additional seat on internal flights for the passenger's safety and comfort.

Luggage is restricted on flight transfers to **20kg per person in soft bags**, which includes all hand luggage and camera equipment. Please refer to your itinerary notes, as in some instances, and in some countries, such as Zambia and Zimbabwe this limitation is decreased to 15kg per person. Please note that luggage in excess of the above restrictions shall result in additional costs for transport and/or storage and should be arranged in advance. Note that laundry can be done on a daily basis at most camps and lodges.

### Health

Please confirm that all Clients are medically fit, in good physical and mental health and that there is nothing which renders him/her unfit to undertake the tour at the time of booking. Any Client with a pre-existing medical condition or illness must declare the true nature of such conditions to the Company before the commencement of the tour. The Client is responsible for attending to any medical condition which he/she may have and must consult with his/her physician in respect of all medical conditions which might be affected by his/her participation in the tour, activities or associated activities.

The Client accepts that certain areas included in the tour are malaria-infected areas and that he/she should take reasonable anti-malaria precautions.

### Insurance

Travel, cancellation and health insurance are highly recommended for all Clients.

### Visas/Passports/Travel Documents

The Client is solely responsible to ensure that his/her passports, visas, insurance cover and vaccination certificates, (and any other travel documents and/or requirements of any nature whatsoever) are valid for the duration of the tour and in the countries to be visited.

### Arrival and Departure Details

It is imperative that we have the correct International/Regional arrival and departure details for the clients in order to plan the itinerary and ensure efficient onward transfers. Costs may be incurred if these details are not given on quotation, or if they change subsequently.

## **TERMS AND CONDITIONS**

We require that you have read and understood our full **SAFARI INFORMATION** and **TERMS AND CONDITIONS** before confirming the itinerary and commencing the safari. However we would like to highlight the following important notes.

### **EXCLUSION OF LIABILITY**

In terms of the trading conditions, and any contract(s) concluded pursuant hereto, the Company acts as a booking agent only, for and on behalf of the Client in procuring services. The Company utilizes the products of various travel Subcontractors. The Company does not provide any direct services to the Clients as its services are limited to procuring and compiling tour packages for its clients.

While the Company makes every effort:

- to engage quality Subcontractors among the airlines, hotels, tour operators and other service providers to constitute the itinerary of the tour; and
- to ensure that the various services that constitutes the tour package will be carried out efficiently and as advertised;

it does not have direct control over the provision of services by Subcontractors and shall not be liable for *inter alia* any loss, damage, injury, additional costs, delay or irregularity that may be occasioned by an error or default, act or omission of any Subcontractor in carrying out the logistics of the tour package, or associated activities.

### **Payment Terms**

Bookings must be confirmed in writing by fax, email and/or registered letter and the deposit payment must be received before the Company can confirm in full to all subcontractors. Once the deposit is received and the booking is confirmed, all terms and conditions apply and our cancellation policies will be in immediate effect.

By confirmation of the booking, the Client acknowledges that all terms and conditions of the Company have been provided and accepted.

The full amount of the tour is payable not less than 60 days prior to the date when the tour commences.

In the event that a booking is not paid in full as per the above payment terms the Company reserves the right to refuse the Client(s) participation in the tour, and the client will be liable for any applicable cancellation fees.

### **CANCELLATIONS**

All cancellations should be made in writing and will only be deemed effective upon acknowledgment of receipt by the Company.

Cancellations will be subject to the following penalties:

- 20% of the total booking fee shall be payable immediately upon confirmation.
- 50% of the total booking 45 - 90 days prior to commencement of the tour.
- 100% of the total booking 44 days or less prior to the commencement of the tour.

Standard Cancellation fees shall apply in instances of postponed departure dates.

### **RESERVATIONS**

Please be advised that for any quotes, no provisional bookings have been made unless otherwise specified by your consultant. Accommodation is subject to availability at the time of the booking.

Costs quoted are subject to change at any time due to *inter alia* excessive exchange fluctuations, fuel costs, taxes, levies, government regulations, rate of exchange, and factors that are imposed upon us by our suppliers and government that are beyond our control.

Provisional bookings will be held for a period of 12 days (unless otherwise advised), where after confirmation of the booking and payment of a 20% non-refundable deposit will be required to secure the booking, failing which the booking will be cancelled.

Clients are to advise the Company at the time of requesting a quotation, and of making a booking, of the ages of all children (under the age of 21 and as at the time of travel) that will be participating in the tour, together with their date of birth, as not all lodges accept children, and there may be restrictions or conditions applicable. Some properties will require that children under the age of 18 share with an adult.

It is recommended that optional additional activities should be requested at the time of requesting a quotation and/or making the booking, specifically in Livingstone or Victoria Falls e.g. sunset cruise, to guarantee availability of such activities.

## **Safari Specialists** – Leopard Camping Safari – Budget - 16 nights

All Clients should allow a minimum 2 - 3 hours connection time in Johannesburg for international flights. Please ask your consultant to check your flight details before booking.

With confirmation of the booking the Client accepts that the tour carries inherent risks, and that the Clients voluntarily assume all risks, which are associated with the tour. All Clients will be required to sign indemnities at the various camps/lodges/service providers, and abide by the Operators Code of Conduct in order to ensure their safety.

On confirmation of a booking, the Company requires personal information with respect to each and every Client e.g. Medical Conditions, Dietary requirements, Travel Insurance details and Emergency contact details. Please complete the Booking form on confirmation of a booking. By choosing not to complete and submit this information to the Company the Client will compromise the Company's response time in the event of an emergency.

With confirmation of the booking the Client confirms that he has read, understood and accepted the terms and conditions of the Company and its Subcontractors.